



02 Size



Australian Agents for Hayward Flow Control

[www.monarchindustrial.com.au](http://www.monarchindustrial.com.au)  
[www.monarchasiapacific.com.au](http://www.monarchasiapacific.com.au)

## FLV Series Bag and Cartridge Filter Product Guide

FLOW CONTROL

define  
design  
deliver



QUALITY | SERVICE | INTEGRITY

## FLV Series Filters, *KEY FEATURES*

### COVER

- Ergonomic Handles Raised to Protect the Vent Valve
- Integral Pressure Relief Valve Threads in Cover
- Vent Valve Provided with Every Filter
- Solid, Buttress Threads
- Liquid Displacing Dome Inside Cover
- Cover Retains Pressure with Hand-Tight Seal (No Additional Tools Necessary)



### BODY

- Self-Draining O-Ring Groove Directs Overflow Back Inside Filter
- Pressure Energized Face-Style Seal Prevents Basket Sticking
- No Internal Threads
- Chamfered Interior Shoulder Surface Ensures Basket Sealing
- Molded-In Legs Assure Proper Basket Placement Within Filter
- Drill and Tap Locations and Mounting Pads for Differential Pressure Gauges
- Optional Drill and Tap NPT (Offset) Ports Available (Must be Ordered) for Alternate Configurations
- Integrally Molded True Union End Connections
- QR Code on Filter Label Leads Directly to Online IOM



### BASKET (BAG FILTER ONLY)

- Heavy Duty Solid Basket Standard
- Optional Hinged Basket can be Fully Opened for Bag Replacement
- Optional Stainless Steel Basket available for High Cv and High Differential Pressure
- Ergonomically Molded Basket Lockdown Handle
- Basket Lockdown Handle and Ring Secures Bag Within Filter
- Vertical Flute Slots in GFPP Basket Prevent Bag Catching and Allow More Open Flow Area



### TRUE UNION END CONNECTIONS

- Allows for Various Sizes and Options Which Includes Socket, Threaded, Socket Fusion and Flanged
- Makes Disconnect of Filter from the Line Easier for Replacement or Maintenance
- Versatile Flow Path for In-line or Loop Configurations (Easily Changed by User)
- Size range of 1-1/4" – 4" / DN32-DN100
- No Direct Threading into the Filter Housing Required



### MOUNTING PAD

- Features Same Footprint as Previous Generation
- Stand-Alone Mounting Capabilities
- Slotted for Easy Installation



Hayward is a registered trademark  
of Hayward Industries, Inc.  
© 2019 Hayward Industries, Inc.



## FLV Series Filters, *BAG CARRIER OPTIONS*

**NEW**

ERGONOMIC,  
LOCKDOWN HANDLE  
SECURES BAG  
WITHIN BASKET

BAG RETAINING RING  
PREVENTS BY-PASS OF  
BAG AND DIRECTS FLOW  
TO CENTER OF BAG

O-RING ASSURES  
FACE-STYLE SEAL  
AGAINST CHAMFERED  
FILTER INTERIOR

CHAMFERED  
FILTER INTERIOR

VERTICAL  
FLUTED SLOTS  
PREVENT BAG  
SNAG AND  
ALLOW MORE  
OPEN FLOW  
AREA

HINGED DESIGN  
ALLOWS  
ANY DEGREE  
OF BASKET  
OPENING

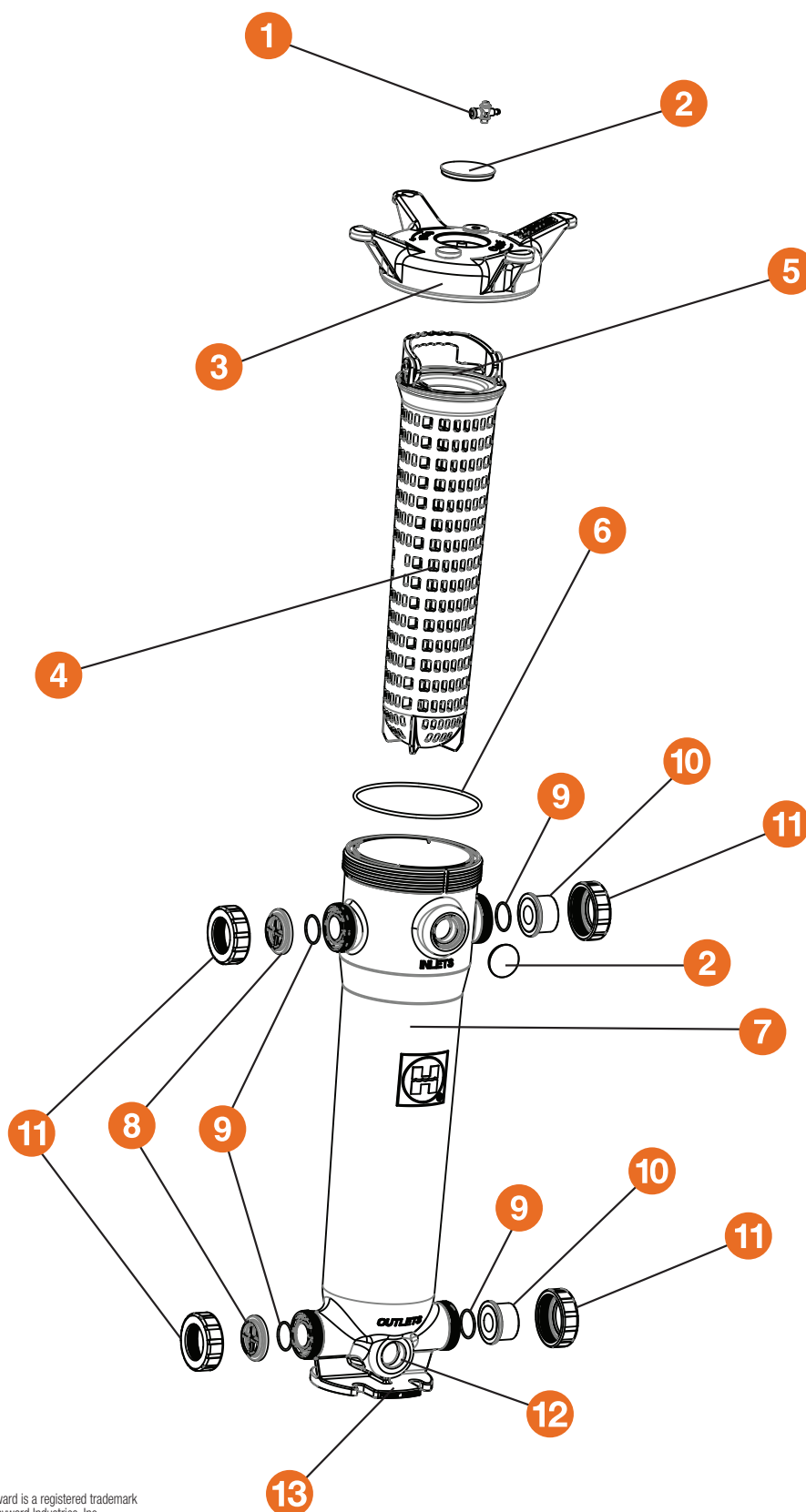
MOLDED-IN  
LEGS ALLOW  
BASKET TO  
STAND FREELY

GFPP HEAVY DUTY SOLID BASKET  
STANDARD

GFPP HINGED DESIGN  
OPTIONAL

316 STAINLESS STEEL  
OPTIONAL

# FLV Series Filters, *EXPLODED VIEW*



## PARTS LIST

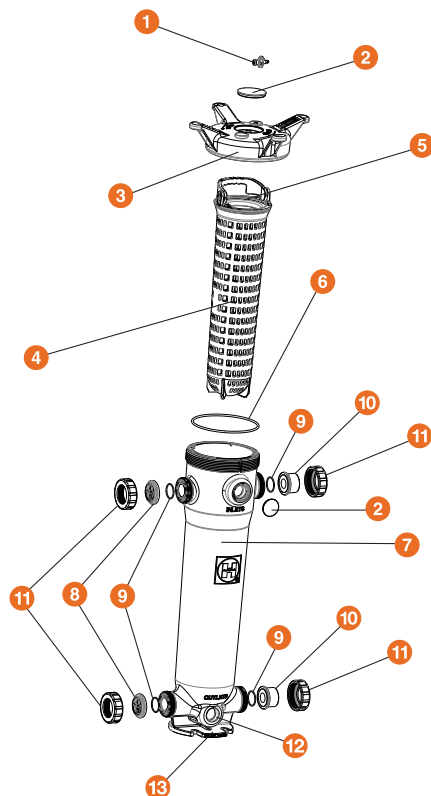
1. Vent Valve (Included)
2. Hayward Bezel
3. Cover
4. Heavy Duty Solid Basket
5. Bag Retaining Ring
6. Cover O-Ring
7. Filter Body
8. End Cap
9. End Connector O-Ring
10. End Connector
11. Assembly Nut
12. Alternate 2" NPT Ports (Optional)
13. Integrally Molded Mounting Pad



Hayward is a registered trademark  
of Hayward Industries, Inc.  
© 2019 Hayward Industries, Inc.



## EXPLODED VIEW



## FLV Series Simplex Bag Filters

DOUBLE LENGTH – 32" GFPP  
 1-1/4" TO 2" PIPE SIZES

### KEY FEATURES

- Platinum Glass Filled Polypropylene
- One-Piece Injection Molded Construction
- Hand Removable, Ergonomic Cover with Liquid Displacing Dome
- Vent Valve Included on Cover
- Rated up to 100 GPM
- True Union Socket, Threaded or Flanged End Connections
- In-Line or Loop Flow Configurations
- Heavy Duty Solid Basket
- Drain Port at Bottom
- Integral Mounting Base
- Easier Installations Due to True Union Connectivity
- Vertical Flow Flutes in Basket, No Bag Snag and More Flow Area

### OPTIONS

- Gauge with Gauge Guard
- Pressure Differential Gauge and Switch
- EPDM Seals
- Cartridge Adapters
- Hinged Basket
- 316 Stainless Steel Basket

### MATERIALS

- GFPP per ASTM D4101, Cell Class 85580
- FPM Standard O-Ring Seals

## TECHNICAL INFORMATION

### SELECTION CHART

SIZE*	MATERIAL	END CONNECTIONS	PIPING SIZES	SEALS	FLOW RATE	PRESSURE RATING
Double Length 7" x 32"	GFPP	GFPP (Threaded and Flanged), PVC/CPVC (Socket and PP Socket Fusion)	1-1/4" – 2" (DN32–DN50)	FPM or EPDM	100 GPM	150 PSI @ 70°F 10 Bar @ 21°C Non-Shock

\* PVC and CPVC socket ends available to ISO 727-1 and threaded ends to BS21.  
 PP socket fusion ends per ASTM F2389 and threaded ends per BS21.  
 Flanged ends available in DIN/EN PN10.

"Patented" Pat. No.: 9,630,127

# FLV Series Simplex Bag Filters

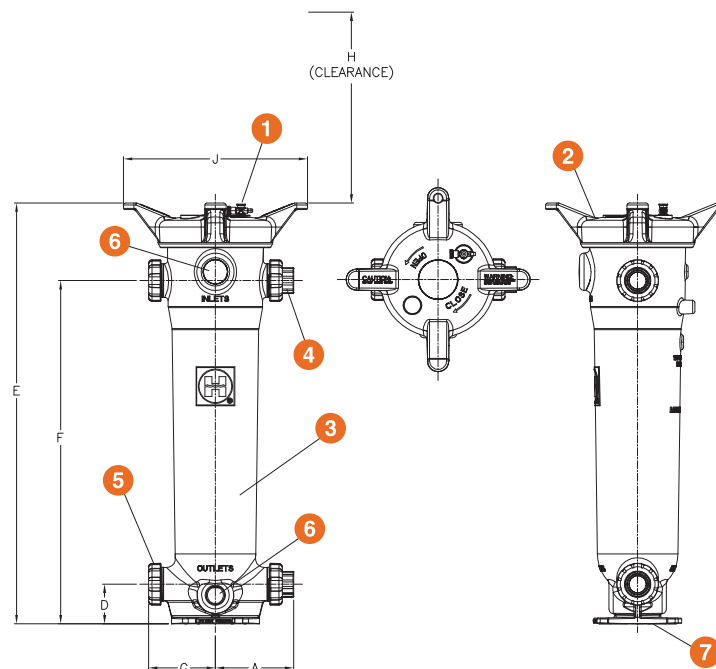
DOUBLE LENGTH – 32" GFPP  
1-1/4" TO 2" PIPE SIZES



## TECHNICAL INFORMATION, CONTINUED

### PARTS LIST\*

1. Vent Valve (Included)
2. Cover
3. Filter Body
4. End Connector
5. Assembly Nut
6. Alternate 2" NPT Ports
7. Integrally Molded Mounting Pad



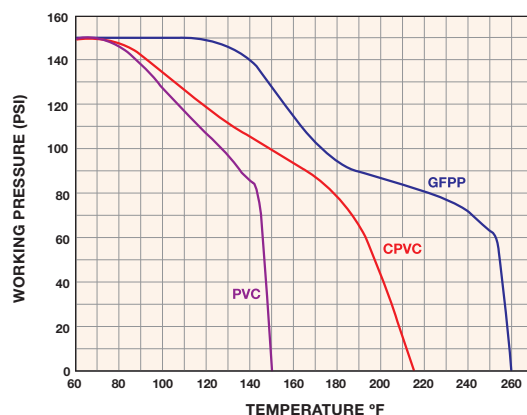
### DIMENSIONS

FILTER SIZE in / DN	A in / mm	D in / mm	E in / mm	F in / mm	G in / mm	H* in / mm	J in / mm
1-1/4" / 32	8.86 / 225	4.50 / 114	47.83 / 1215	39.00 / 991	7.60 / 193	31.25 / 794	20.93 / 532
1-1/2" / 40	8.86 / 225	4.50 / 114	47.83 / 1215	39.00 / 991	7.60 / 193	31.25 / 794	20.93 / 532
2" / 50	8.91 / 226	4.50 / 114	47.83 / 1215	39.00 / 991	7.60 / 193	31.25 / 794	20.93 / 532

Dimensions are subject to change without notice – consult factory for installation information

\* Clearance from top for basket removal

### OPERATING TEMPERATURE / PRESSURE



Hayward recommends that you monitor your pressure differential with a differential gauge or pressure gauges



Hayward is a registered trademark of Hayward Industries, Inc.  
© 2019 Hayward Industries, Inc.

### SPECIFICATIONS

**Material of Construction:** GFPP

**Inlet Connections:** GFPP (Threaded or Flanged)  
PVC (Socket)  
CPVC (Socket)

**Outlet Connections:** GFPP (Threaded or Flanged)  
PVC (Socket)  
CPVC (Socket)

**Bag Size:** Bag Size #2: 7" x 32"

**Pressure Rating:** 150 PSI @ 70°F Non-Shock

**O-Ring Seals:** FPM or EPDM

**Bag Ratings:** 1, 5, 10, 25, 50, 100, 150, 200, 400, 600 and 800 Microns

**Flow Rate:** 100 GPM (May be Limited by Pipe Size or Bag Choice)

**Weight:** 66.4 lbs.



## FLV Series Simplex Bag Filters

DOUBLE LENGTH – 32" GFPP  
 2-1/2" TO 4" PIPE SIZES

### KEY FEATURES

- Platinum Glass Filled Polypropylene
- One-Piece Injection Molded Construction
- Hand Removable, Ergonomic Cover with Liquid Displacing Dome
- Vent Valve Included on Cover
- Rated up to 150 GPM
- True Union Socket, Threaded or Flanged End Connections
- In-Line or Loop Flow Configurations
- Heavy Duty Solid Basket
- Drain Port at Bottom
- Integral Mounting Base
- Easier Installations Due to True Union Connectivity
- Vertical Flow Flutes in Basket, No Bag Snag and More Flow Area

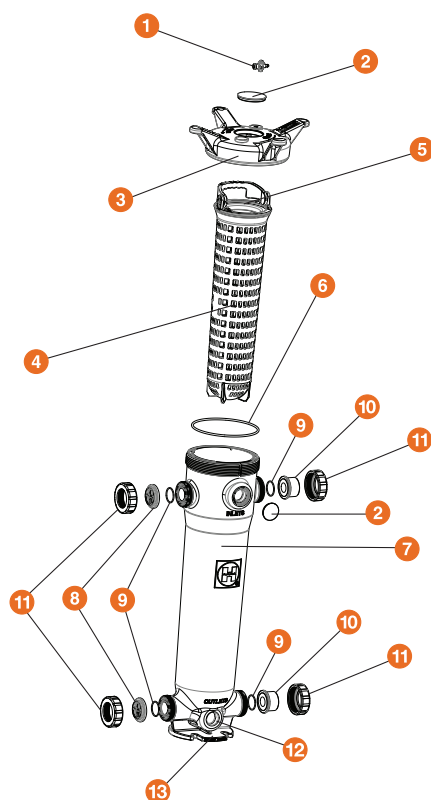
### OPTIONS

- Gauge with Gauge Guard
- Pressure Differential Gauge and Switch
- EPDM Seals
- Cartridge Adapters
- Hinged Basket
- 316 Stainless Steel Basket

### MATERIALS

- GFPP per ASTM D4101, Cell Class 85580
- FPM Standard O-Ring Seals

### EXPLODED VIEW



## TECHNICAL INFORMATION

### SELECTION CHART

SIZE*	MATERIAL	END CONNECTIONS	PIPING SIZES	SEALS	FLOW RATE	PRESSURE RATING
Double Length 7" x 32"	GFPP	GFPP (Threaded and Flanged), PVC/CPVC (Socket and PP Socket Fusion)	2-1/2" – 4" (DN65–DN100)	FPM or EPDM	150 GPM	150 PSI @ 70°F 10 Bar @ 21°C Non-Shock

\* PVC and CPVC socket ends available to ISO 727-1 and threaded ends to BS21.  
 PP socket fusion ends per ASTM F2389 and threaded ends per BS21.  
 Flanged ends available in DIN/EN PN10.

"Patented" Pat. No.: 9,630,127



# FLV Series Simplex Bag Filters

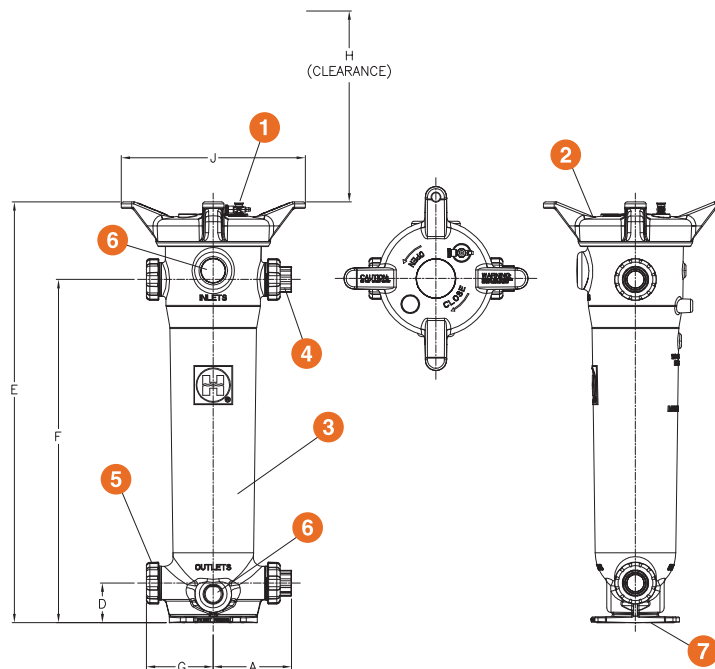
DOUBLE LENGTH – 32" GFPP  
2-1/2" TO 4" PIPE SIZES



## TECHNICAL INFORMATION, CONTINUED

### PARTS LIST\*

1. Vent Valve (Included)
2. Cover
3. Filter Body
4. End Connector
5. Assembly Nut
6. Alternate 2" NPT Ports
7. Integrally Molded Mounting Pad



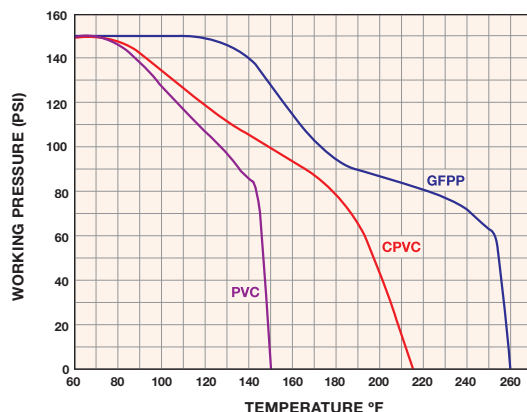
### DIMENSIONS

FILTER SIZE in / DN	A in / mm	D in / mm	E in / mm	F in / mm	G in / mm	H* in / mm	J in / mm
2-1/2" / 65	9.79 / 249	4.50 / 114	47.83 / 1215	39.00 / 991	8.38 / 213	31.25 / 794	20.93 / 532
3" / 80	9.73 / 247	4.50 / 114	47.83 / 1215	39.00 / 991	8.38 / 213	31.25 / 794	20.93 / 532
4" / 100	10.17 / 258	4.50 / 114	47.83 / 1215	39.00 / 991	8.38 / 213	31.25 / 794	20.93 / 532

Dimensions are subject to change without notice – consult factory for installation information

\* Clearance from top for basket removal

### OPERATING TEMPERATURE / PRESSURE



Hayward recommends that you monitor your pressure differential with a differential gauge or pressure gauges



Hayward is a registered trademark of Hayward Industries, Inc.  
© 2019 Hayward Industries, Inc.

### SPECIFICATIONS

- Material of Construction:** GFPP
- Inlet Connections:** GFPP (Threaded or Flanged)  
PVC (Socket)  
CPVC (Socket)
- Outlet Connections:** GFPP (Threaded or Flanged)  
PVC (Socket)  
CPVC (Socket)
- Bag Size:** Bag Size #2: 7" x 32"
- Pressure Rating:** 150 PSI @ 70°F Non-Shock
- O-Ring Seals:** FPM or EPDM
- Bag Ratings:** 1, 5, 10, 25, 50, 100, 150, 200, 400, 600 and 800 Microns
- Flow Rate:** 150 GPM (May be Limited by Pipe Size or Bag Choice)
- Weight:** 71.4 lbs.