



01 Size



Australian Agents for Hayward

www.monarchindustrial.com.au

www.monarchasiapacific.com.au

FLV Series PVC & CPVC Bag Filter Product Guide

FLOW CONTROL

define
design

deliver

16

QUALITY

SERVICE

INTEGRITY



FLV Series PVC & CPVC Bag Filters

SINGLE LENGTH – 16"
1-1/4" TO 2" PIPE SIZES

KEY FEATURES

- Available in PVC or CPVC Materials
- True Union End Connections - Socket, Threaded or Flanged
- Hand Removable, Ergonomic Cover with Liquid Displacing Dome
- Vent Valve Included On Cover
- Rated up to 100 GPM
- In-Line or Loop Flow Configurations
- Solid 1-Piece Basket
- Drain Port at Bottom
- Integral Mounting Base

KEY BENEFITS

- Easier Installations Due to True Union Connectivity
- Vertical Flow Flutes in Basket, No Bag Snag and More Flow Area

TYPICAL APPLICATIONS

- Water and Wastewater Treatment
- Desalinization, RO and Deionized Water Systems
- Chemical Processing
- Bleach & Sodium Hypochlorite Processing
- Metal Plating & Surface Finishing
- Aquatic and Animal Life Support Systems
- Marine and Corrosive Environments

OPTIONS

- Pressure Gauge with Gauge Guard
- Pressure Differential Gauge and Switch
- EPDM O-Ring Seals
- Duplex Configurations

MATERIALS

- PVC Cell Class 12454 per ASTM D1784
- CPVC Cell Class 23447 per ASTM D1784
- FPM Standard O-Ring Seals

TECHNICAL INFORMATION

SELECTION CHART

SIZE / BODY MATERIAL	END CONNECTIONS	PIPING SIZES	O-RING SEALS	PRESSURE RATING (BAR)
Single Length 7" x 16" PVC or CPVC	PVC (Socket, Threaded & Flanged)	1-1/4" – 2" rated @ 100 GPM*	FPM or EPDM	150 PSI @ 70°F Non-Shock (10 Bar / 1 MPa @ 21°C)
	CPVC (Socket, Threaded & Flanged)			

* May be Limited by Pipe Size or Bag Choice

FLV Series PVC & CPVC Bag Filters

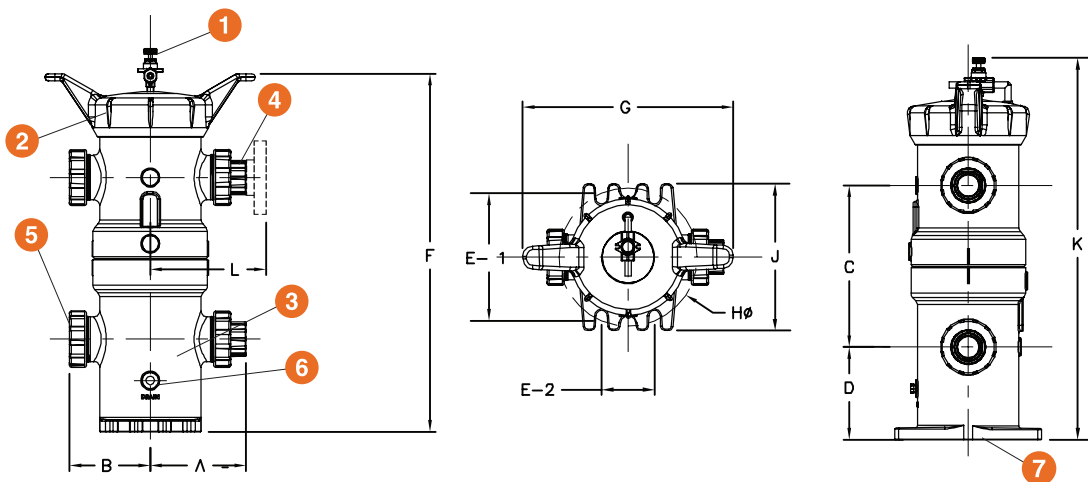
SINGLE LENGTH – 16"
1-1/4" TO 2" PIPE SIZES



TECHNICAL INFORMATION

PARTS LIST

1. Vent Valve (Included)
2. Cover
3. Filter Body
4. End Connectors
5. Assembly Nut
6. Drain Port & Plug with O-Ring
7. Integrally Molded Mounting Pad

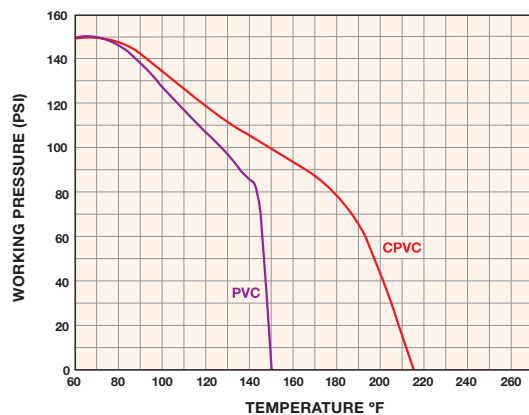


DIMENSIONS – INCHES / MILLIMETERS

FILTER SIZE in / DN	A in / mm	B in / mm	C in / mm	D in / mm	E1 in / mm	E2 in / mm	F in / mm	G in / mm	H Ø B/C in / mm	K in / mm	L in / mm
1-1/4"	8.16 / 207	6.88 / 175	13.75 / 349	7.87 / 200	10.86 / 276	4.50 / 114	30.50 / 775	17.90 / 455	11.75 / 298	32.0 / 813	9.58 / 243
1-1/2"	8.07 / 205	6.88 / 175	13.75 / 349	7.87 / 200	10.86 / 276	4.50 / 114	30.50 / 775	17.90 / 455	11.75 / 298	32.0 / 813	9.66 / 245
2"	8.16 / 207	6.88 / 175	13.75 / 349	7.87 / 200	10.86 / 276	4.50 / 114	30.50 / 775	17.90 / 455	11.75 / 298	32.0 / 813	9.90 / 251

Dimensions are subject to change without notice – consult factory for installation information.

OPERATING TEMPERATURE / PRESSURE

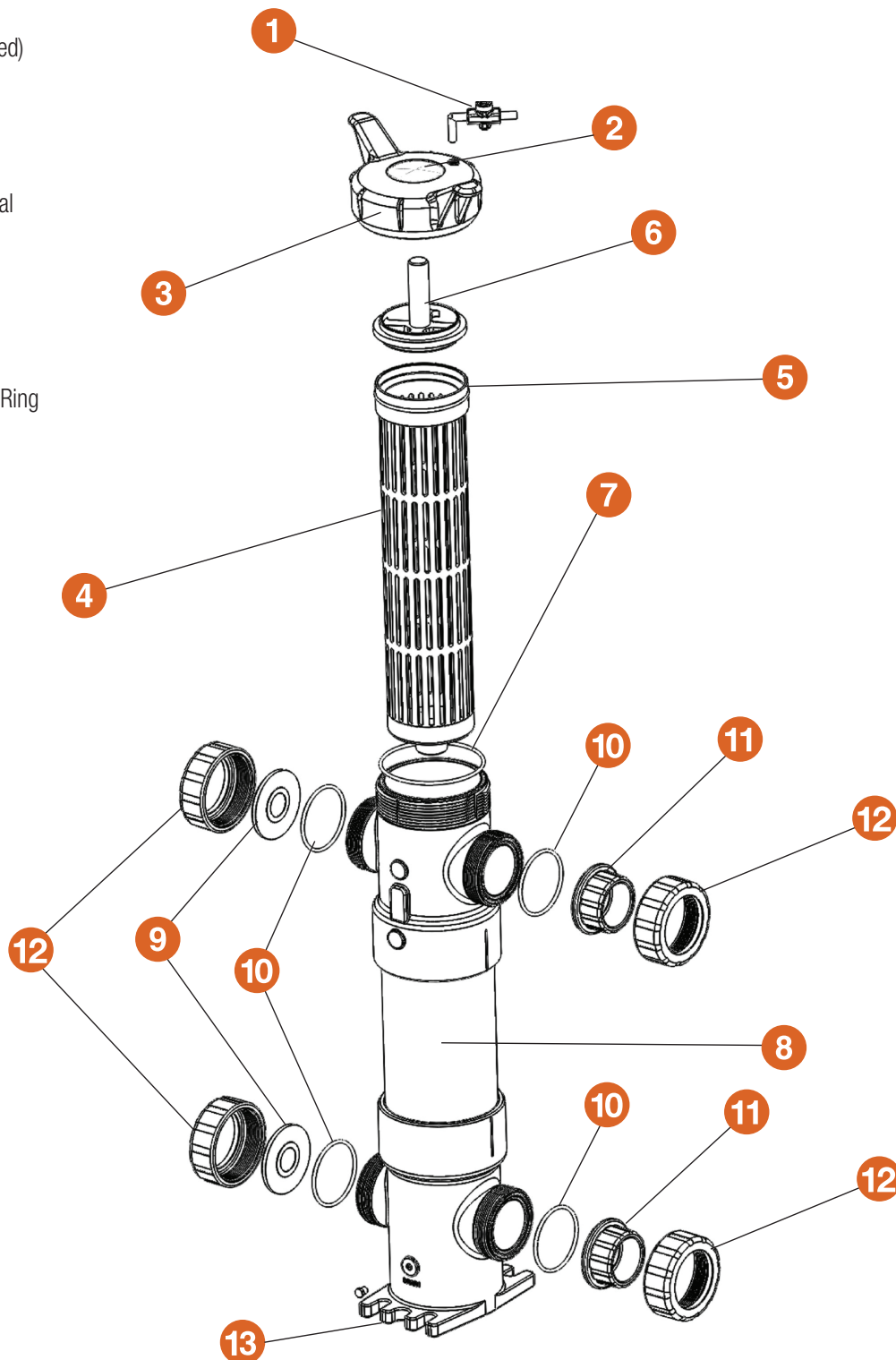


SPECIFICATIONS

- Material of Construction:** PVC or CPVC
- Inlet Connections:** PVC (Socket, Threaded or Flanged)
CPVC (Socket, Threaded or Flanged)
- Outlet Connections:** PVC (Socket, Threaded or Flanged)
CPVC (Socket, Threaded or Flanged)
- Bag Size:** Bag Size #1: 7" x 16"
- Pressure Rating:** 150 PSI @ 70°F Non-Shock
- O-Ring Seals:** FPM or EPDM
- Bag Ratings:** 1, 5, 10, 25, 50, 100, 150, 200, 400, 600 and 800 Microns
- Flow Rate:** 100 GPM (May be Limited by Pipe Size or Bag Choice)
- Weight:** 50 lbs.

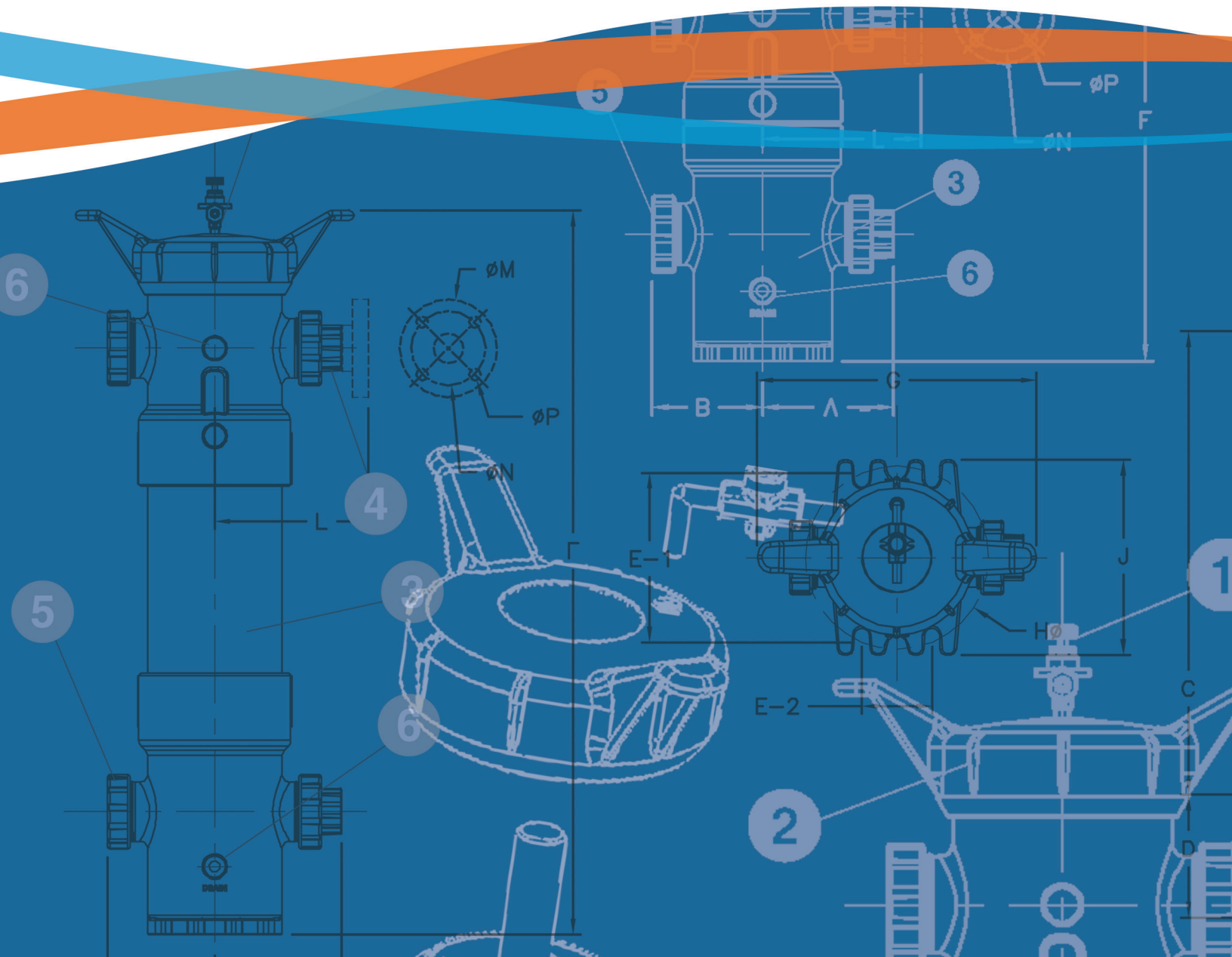
TOTAL PART LIST

1. Vent Valve (Included)
2. Hayward Bezel
3. Cover
4. Basket
5. Basket O-Ring Seal
6. Bag Retainer
7. Cover O-Ring
8. Filter Body
9. End Cap
10. End Connector O-Ring
11. End Connector
12. Assembly Nut
13. Integrally Molded Mounting Pad



www.monarchindustrial.com.au

www.monarchasiapacific.com.au



Hayward is a registered trademark
 of Hayward Industries, Inc.
 © 2016 Hayward Industries, Inc.

C/PVC-FLV0216

Contact Hayward Flow Control with questions: **USA:** 1.888.429.4635 • Fax: 1.888.778.8410 • One Hayward Industrial Drive • Clemmons, NC 27012 USA
Canada: 1.888.238.7665 • Fax: 1.905.829.3636 • 2880 Plymouth Drive • Oakville, ON L6H 5R4 Canada • Email: hflowcanada@hayward.com
 Visit us at: www.haywardflowcontrol.com • Email: hflow@hayward.com